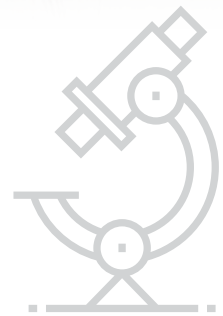


Australian Eggs

Animal Welfare Research Program

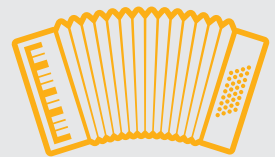


Good hen welfare is critical to the sustainability of the egg industry. Australian Eggs has commenced new welfare projects as part of its R&D program for 2018-19.



BROADER PERSPECTIVE

In response to growing community interest, we have broadened our research program to concepts that go beyond the physical condition of hens.



NEW TECHNOLOGY AND APPROACHES

Our understanding of hen welfare will be improved by developing new technology to measure stress in hens and identifying values based elements in animal welfare science.



ONGOING IMPROVEMENT

The aim is to drive ongoing improvement by contributing to a more productive debate around animal welfare issues and exploring new ways to measure welfare outcomes.

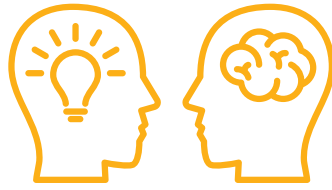


WELFARE IMPROVEMENTS PROGRAM



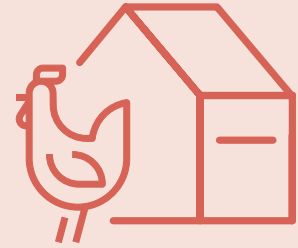
New technologies to assess welfare

This project will use ground-breaking science to explore better ways to measure stress in hens and provide insights on hens' positive and negative experiences.



Animal welfare and values

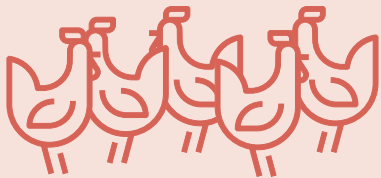
This project will identify values based elements arising from hen welfare science for the purpose of further research.



Hen welfare issues

Several animal welfare scientists will conduct a comprehensive literature review and provide a robust analysis of key welfare issues.

ON-FARM HEN WELFARE PROJECTS



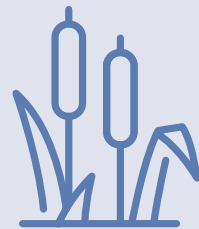
Causes of smothering

Smothering occurs when hens flock in such numbers that some can suffocate. A detailed analysis of smothering will guide improved management practices.



UV light and ranging

Hens are sensitive to intense light and this observational study will inform how light impacts ranging behaviour in free range flocks.



Resilient plants

This study will identify suitable species for different geographic regions so hens have access to plant cover on the range.

To learn more about egg farming, visit the Australian Eggs website.

www.australianeggs.org.au

